

# Belchford and Fulletby Parish Council Newsletter Spring 2024

## Parish Council Meeting Report Thursday 18<sup>th</sup> January 2024

Flooding was the topic of the Public Forum at the January meeting along with blocked drains and culverts. Dog waste and removal of private signs was also raised. An NDP update was received and more trees have been planted at the community woodland. The management of the 2 defibrillators was discussed and an agreement with LIVES will be set up so that they are regularly checked. The website is to be given some overdue attention. A financial report was provided and items for the next newsletter and meeting were suggested. **Report compiled by Parish Clerk Karen Elliot**

### Parish Council Website

We have updated our parish council website with lots of new content which shows what beautiful, active and vibrant communities we live in. Take a look for yourselves on -

<https://belchford-fulletby.parish.lincolnshire.gov.uk/>

We plan to replace the banner photographs on the website homepage with ones relevant to Belchford and Fulletby. If you have a great image that you would like to be displayed please email it to one of the councillors - photos must be high-resolution in landscape format and have space for cropping.

### Belchford & Fulletby Plan

Final edits to the Belchford & Fulletby Neighbourhood Development Plan are nearing completion. In early April the NDP will be submitted, together with necessary supporting documentation, to ELDC who will organise its formal adoption into local planning law culminating in a referendum which will hopefully be held this autumn. Once adopted we will be one of the smallest communities in the UK to have an NDP. The plan and supporting documentation are available on [www.belchfordandfulletbyplan.org](http://www.belchfordandfulletbyplan.org)

## *Banovallum Brass Band Concert*

*traditional marches, classical pieces, songs from the stage, pop songs, swing numbers, folk music*

*Followed by a tasty supper with bar*

*At Belchford Church - 4pm on Sunday 14th of April*



For tickets and information contact  
Smithy 07831533626 or Carey 07902923402

### **A fund raiser for Belchford Church & Serendipity Foundation**

£25 per person (£18 concession for children under 16)

Payment by cash, cheque made out to Belchford PCC

or bank transfer - Lloyds 30 98 97 Acc. No. 75819160 Belchford PCC (surname as reference)

## **Belchford & Fulletby Village Hall** **AGM Wednesday 24th April 7.30pm**

We would welcome new committee members from either Fulletby or Belchford as the Hall is maintained for both villages.

### **The Village Hall fees and how to book it:**

Prices for the inhabitants of the two villages have always been lower than those of outsiders.

**The rates are at present £6/hour for Belchford & Fulletby residents or booking on behalf of a group they are organising.**

It is £10/hour for outsiders.

**Sue is booking secretary 01507 533344**



**Fulletby's Glebe Field** is looking very smart with villagers helping lay the surrounding hedge with the Lincolnshire Wolds Countryside Services. The grass has also had its first cut of the year.



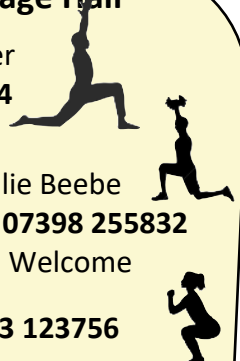
## **Fitness Groups in Belchford & Fulletby Village Hall**

Monday 9.30 - 10.30 am } YOGA with Sue Waller  
Tuesday 9.30 - 10.30 am } Phone **07941 009154**  
Thursday 9.00 - 10.00 am } All Welcome

Monday 6.30 - 7.15 pm CIRCUITS } Ellie Beebe  
Wednesday 6.30 - 7.15 pm JUST PEACHY } Phone **07398 255832**  
All Welcome

Tuesday 6.00 - 7.15 pm YOGA Ragged Robins **07973 123756**

**Phone to find out how to book ... come and give it a try!**



Belchford

# Church News

Fulletby

**Palm Sunday Service** 24<sup>th</sup> March 10am

**Quiet Prayer day** 19<sup>th</sup> March 1pm - 4pm

On the evening of Monday March 3rd our church of St Peter & St Paul held its spring management meeting chaired by Mr Neil Marwood. 8 parishioners were in attendance .

Everyone expressed their thanks and appreciation to Neil and his helpers who are so instrumental to the success of our church.

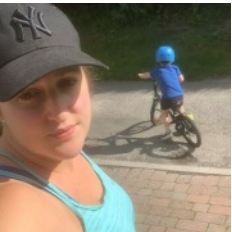
Barry Jenks was thanked for his motor mower skills

Finances are in good order with sufficient funds in place to carry out roof repairs this summer. The church has become a regular venue for both cyclists and visiting walkers.

Fund raising events include a monthly drawn lottery, live in April. Also in April we will host a concert by Banovallum Brass followed by a two course supper at the village hall.

Tickets are available now for the event on Sunday April 14th at 4pm , proceeds to be split between our church and the Serendipity Foundation in Louth. Several other events are in the programme for the summer.

Many positive comments have been received from visitors who appreciate both the excellent state of the church and its central role as an asset in the community.



## Stephanie Fixter from Fulletby My Story

*Let's start this by saying I am NOT a natural runner so this is going to be a massive challenge! My aim is to complete the London Marathon to the best of my ability, I am running to raise money for cancer research, I would like to dedicate the run to my friends and family many of whom have fought bravely, and my best friend whose family are currently battling with this horrible disease.*

**Thank you**

**To donate go to Fulletby on FB**

## **Contacts for Local Groups**

Fitness Classes (Mon, Wed evenings) Ellie 07398 255832  
Yoga Group (Mon, Tues, Thurs mornings) Sue 07941 009154  
Yoga Group (Tues evening) Miranda 07973 123756  
Parent & Toddlers: Sue Murfin 533344  
Belchford Church warden: Neil 07733011046  
Fulletby Church warden: Paul 07939 297774  
Sewing & Crafts for All: Val 534322 Or 07825 176177  
Village Hall: Bookings Secretary: Sue Murfin 533344

## **CHURCH LOTTERY**

As an interesting fund raiser for Belchford church for on going repairs and maintenance we are still hoping to have a **Church Lottery... this would involve Participants putting in £30 every 6 months to be part of a monthly draw of 3 prizes £25, £10 and £5 !!** If you are interested in taking part **Please text fill in the slip and drop it to : Neil Burnside, Main Road**

## **Church Lottery**

Name ..... Contact Number .....

Address .....



**Fulletby Sunday Service**

Sunday 5<sup>th</sup> May 10am

## **Village Green Report**

### **Save The Dates for 2024**

#### **29th June - Village Fete**

We would love any ideas for this event. Our aim is to add a few new elements to the fete, so suggestions welcome. If you would like to help on the day, or in the run up, or have a stall/skill that you want to run/use on the day please contact Katy on 07792 869530 -All Welcome.

#### **15th September – Rounders**

There will be some fierce competition again this year, so start to get your team together. The trophy sits with the Baumber team now, so we need it back in Fulletby or Belchford. Again we are looking for help on the day (umpire and scorer are needed too) so please contact us if you're free.

**To join the Belchford & Fulletby What's App group**

**text Jill on 07917110614**

just for bits of local info and alerts!



**Parish Councillors:** Peter Thompson (Chairman), Ian Goodall and Jill Newby (Vice-Chairmen), Nigel Briggins Shaw (Responsible Finance Officer), Paul Morris, Kris Skalka, Miranda Brown, Katy Hockham, Nancy Sorenti and John Smith

Full contact details for all councillors on council website

[\(https://belchford-fulletby.parish.lincolnshire.gov.uk/\)](https://belchford-fulletby.parish.lincolnshire.gov.uk/)